

the open

End Panels

Specification & Pricing Guide

version 3.01

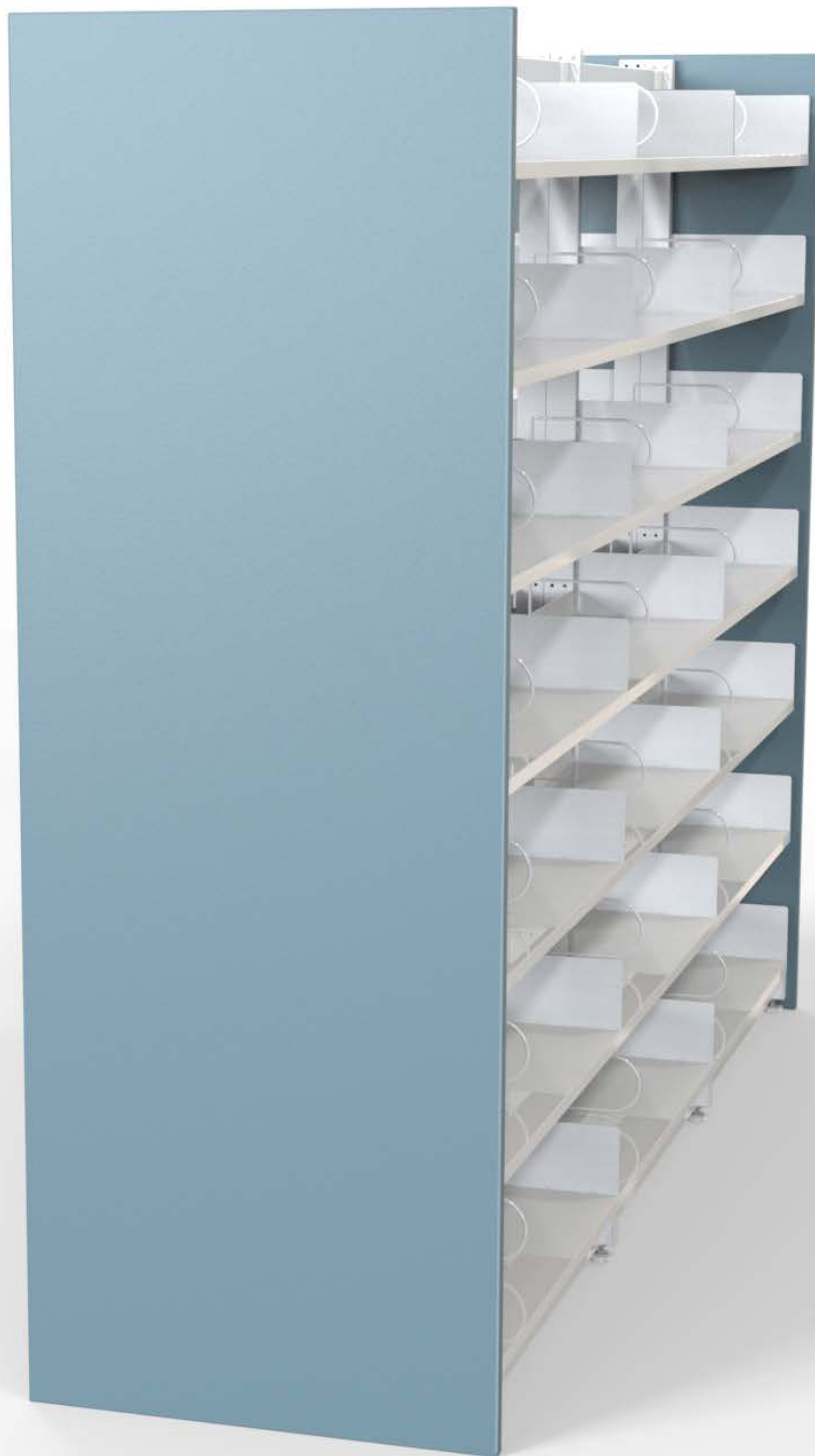


Table of Contents

Ordering Information

Ordering Information Checklist	4
--------------------------------------	---

Specifications Guide

Barrister	6
Concord	6
Davidson	6
Deveraux	7
Slatwall	7
Southbury	7
LIAT Shipping Zones	8
Shipping Pricing Guide	8
Pricing Guide Tutorial	10
Barrister Build Guide	14
Barrister Pricing Guide	15
Concord Build Guide	16
Concord Pricing Guide	17
Davidson Build Guide	18
Davidson Pricing Guide	19
Deveraux Build Guide	20
Deveraux Pricing Guide	21
Slatwall Build Guide	22
Slatwall Pricing Guide	23
Southbury Build Guide	24
Southbury Pricing Guide	25

Terms and Conditions

End Panels Terms and Conditions	26
GSA Terms and Conditions	28

Ordering Information

Ordering Information Checklist

Use this checklist to be sure you have all of the necessary information to order your End Panel unit.

Catalog Number

Use our build guides to create your End Panel catalog number.

Wood Species

Oak
Maple

Wood Finish

Maple

Amber Cherry | ACM
Amber Maple | AMM
Carmel Maple | CMM
Dark Mahogany | DMM
Light Cherry | LCM
Medium Cherry | MCM
Medium Mahogany | MMM
Medium Walnut | MWM
Natural Maple | NMM
Montana Walnut | OWM
Versailles Anigre | VAM

Oak

Dark Mahogany | DMO
Golden Oak | GOO
Light Cherry | LCO
Medium Oak | MOO
Medium Cherry | MCO
Medium Walnut | MWO
Medium Mahogany | MMO
Natural Oak | NOO

Color Stain

Blue
Green
Orange
Red
Yellow

PVC Edge Band

Amber Cherry | AC-PVC
Natural Teak | NT-PVC
Huntington Maple | HM-PVC
Kensington Maple | KM-PVC
Montana Walnut | MW-PVC
Versailles Anigre | VA-PVC

Cafelle | CA-PVC
Nepal Teak | NP-PVC
Windsor Mahogany | WM-PVC
Hampton Walnut | HW-PVC
Natural Oak | NO-PVC

Black | BK-PVC
Fashion Grey | FG-PVC
Frosty White | FW-PVC
North Sea | NS-PVC
Slate Grey | SG-PVC

Laminate Selection

Standard Wilsonart, Formica, Nevamar or Pionite. Please specify manufacturer, color, and model number.

□ MDF Powder Coat

Standard Colors

Cajun Red	Mandarin
Electric Lime	Raisin
Extra White	Refuge
Griffin	Web Gray

Color match powder coating is available, send us a physical sample as well as the six digit color code. \$750 list color matching fee.

ⓘ LIAT Finish Match Suggestions

LIAT Wood Finish	Laminate	PVC Edge
Amber Cherry on Maple ACM	Wilsonart Amber Cherry 7919K-60	Amber Cherry AC-PVC
Amber Maple on Maple AMM	Formica Natural Teak 8849-58	Natural Teak NT-PVC
Carmel Maple on Maple CMM	—	—
Dark Mahogany on Maple DMM	—	—
Light Cherry on Maple LCM	Wilsonart Huntington Maple 7929-60	Huntington Maple HM-PVC
Medium Cherry on Maple MCM	—	—
Medium Mahogany on Maple MMM	—	—
Medium Walnut on Maple MWM	—	—
Natural Maple on Maple NMM	Wilsonart Kensington Maple 10776-60	Kensington Maple KM-PVC
Montana Walnut on Maple OWM	Wilsonart Montana Walnut 7110K-60	Montana Walnut MW-PVC
Versailles Anigre on Maple VAM	Wilsonart Versailles Anigre 7923K-60**	Versailles Anigre VA-PVC
Dark Mahogany on Oak DMO	Wilsonart Cafelle 7933K-60**	Cafelle CA-PVC
Golden Oak on Oak GOO	Wilsonart Nepal Teak 7209K-60	Nepal Teak NP-PVC
Light Cherry on Oak LCO	—	—
Medium Oak on Oak MOO	—	—
Medium Cherry on Oak MCO	Wilsonart Windsor Mahogany 7039K-60	Windsor Mahogany WM-PVC
Medium Walnut on Oak MWO	Wilsonart Hampton Walnut 7959K-38**	Hampton Walnut HW-PVC
Medium Mahogany on Oak MMO	Pionite Jewel Mahogany WY351-N	—
Natural Oak on Oak NOO	Formica Natural Oak 346	Natural Oak NO-PVC
—	Wilsonart Black 1595-60	Black BK-PVC
—	Wilsonart Fashion Grey D381-60	Fashion Grey FG-PVC
—	Wilsonart Frosty White 1573-60	Frosty White FW-PVC
—	Wilsonart North Sea D90-60	North Sea NS-PVC
—	Wilsonart Slate Grey D91-60	Slate Grey SG-PVC

(—) a suggested match is not available.

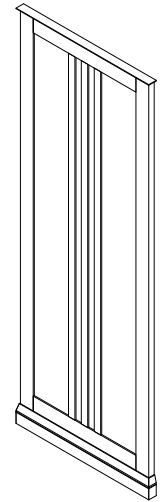
**indicates premium pricing, please contact project management for more information.

Specifications Guide

Barrister

General Construction

The end panels shall be 1-3/4" thick consisting of a 1" thick 3-ply particleboard panel with select grade "A" veneer on both faces. The panel shall be framed on three edges with a 3" wide x 1-1/4" thick eased solid hardwood band. This band shall be attached to the panel by means of a spline and glued joint. Panels 20" deep and above shall have three 1/4" x 1-1/2" wide solid hardwood vertical slats running between the top and bottom edge bands. The panel shall have a top crown constructed of 1-3/4" wide by 1/2" thick solid hardwood. The band shall be flush on the back edge and angle into the face on the front and sides. The bottom band shall be 1-1/4" thick by 7" high with a decorative plinth solid hardwood molding that is 4" high x 1/2" thick with a 1/8" x 1/8" cut reveal 2-1/4" above the bottom of the panel. The plinth shall begin to angle back towards the panel 1/4" above the reveal. The plinth molding shall be on the face and two sides of the end panel.



Overall Size

If custom sizes are desired, the overall sizes must be provided by the customer at the time of order. Contact project management for pricing.

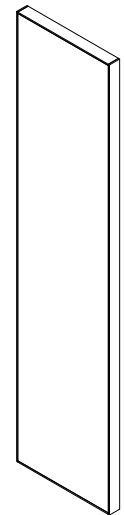
Hardware

No hardware is included for mounting end panels.

Concord

General Construction

The end panels shall be constructed of 1" thick, 3-ply particle board core construction with a vertical grade high pressure laminate on both faces. The edges shall be externally banded with a 3mm PVC edge band.



Overall Size

If custom sizes are desired, the overall sizes must be provided by the customer at the time of order. Contact project management for pricing.

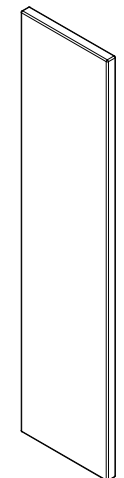
Hardware

No hardware is included for mounting end panels.

Davidson

General Construction

The end panels shall be 1" thick and be constructed from a specially formulated medium-density fiberboard (MDF) core. The panels shall receive a highly durable electrostatic powder coat paint finish. All edges shall be eased.



Overall Size

If custom sizes are desired, the overall sizes must be provided by the customer at the time of order. Contact project management for pricing.

Hardware

No hardware is included for mounting end panels.

Deveraux

General Construction

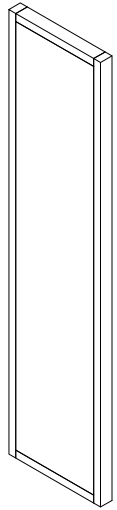
The end panels shall be constructed of 1-1/4" thick particleboard core with grade "A" veneer on both faces. The exposed edges shall be externally banded with a 3/4" solid hardwood.

Overall Size

If custom sizes are desired, the overall sizes must be provided by the customer at the time of order. Contact project management for pricing.

Hardware

No hardware is included for mounting end panels.



Slatwall

General Construction

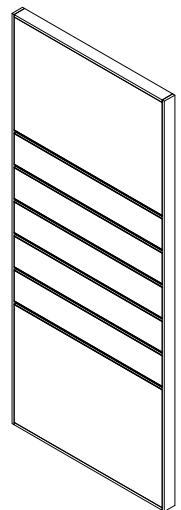
The end panels shall be constructed of 1-1/4" thick particleboard core with grade "A" veneer on both faces. The top slat will be located 12" from the top for 6-slat panels, and 3" from the top for full-slat panels. Slats will be routed on 3-1/2" centers and have PVC slats inserted. The exposed edges shall be externally banded with a 1/4" solid hardwood.

Overall Size

If custom sizes are desired, the overall sizes must be provided by the customer at the time of order. Contact project management for pricing.

Hardware

No hardware is included for mounting end panels.



Southbury

General Construction

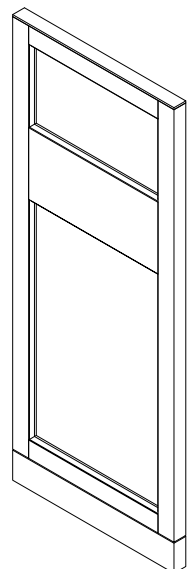
The end panels shall have a 1-3/16" thick particle board core panel with grade "A" veneer faces framed with 2-3/4" wide x 1-3/4" thick solid hardwood on all four sides. The vertical and horizontal solids shall be joined together by means of a blind mortise and tenon joint. The back of the panel shall be flush. The front panel shall be inset 3/4" from the face of the raised solids. The raised solid around the face of the inset panel shall have a cope and reversed cope shape on all four of the inside edges. Applied pin nailed moldings shall NOT be acceptable. The base of the end panel shall be 4" high x 1-3/4" solid hardwood attaching to the 2-3/4" high maple solids by means of a spline and glued joint. There shall be a 1/8" thick by 1/8" wide reveal between these two solids on the face and two edges. Panels 60" and higher shall have a 10" high x 3/4" solid hardwood signage panel starting 13" from the top of the panel attaching to the face of the inset panel by means of glue and pin nails. This solid hardwood signage panel shall be captured within the vertical solid banding and be coped on all edges.

Overall Size

If custom sizes are desired, the overall sizes must be provided by the customer at the time of order. Contact project management for pricing.

Hardware

No hardware is included for mounting end panels.

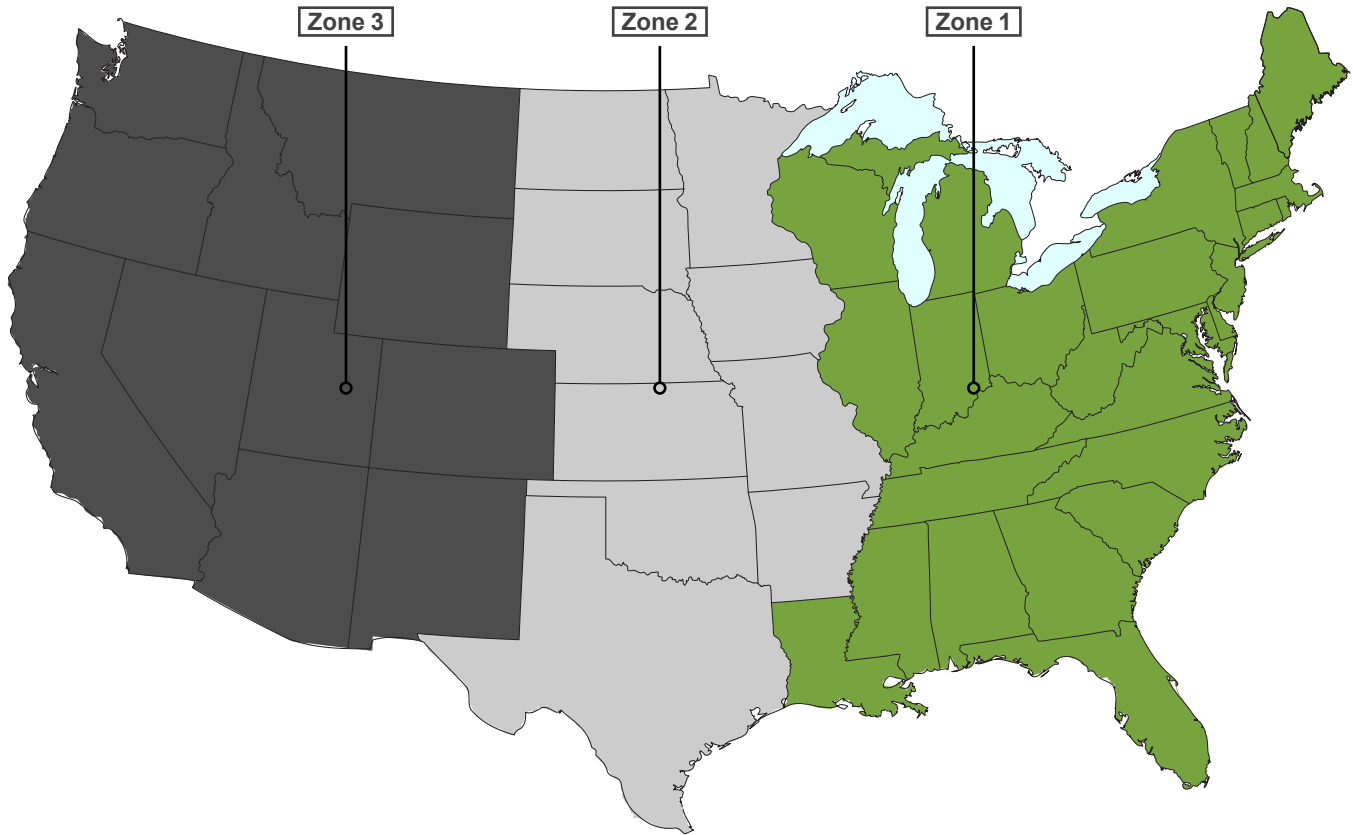


LIAT Shipping Zones

Shipping | Pricing Guide

Use the following guide to **determine the delivered pricing** for your LIAT furniture product by **selecting your zone** from the map and reviewing the price changes for each zone. To **determine your list price**, add your prices from your selected furniture and then **add the shipping cost based on your designated zone.**

USA



- Zone 1** No extra cost
- Zone 2** Add 4% to the list price
- Zone 3** Add 7% to the list price

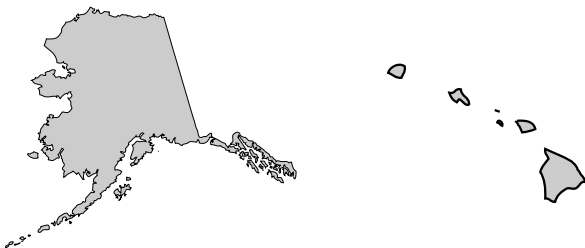
Zone 1 orders less than \$5,000 list will have a freight minimum fee of **\$375** list.

Zone 2 orders less than \$5,000 list will have a freight minimum fee of **\$375** list, plus **4%** of list

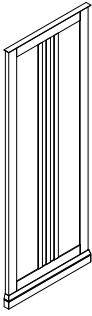
Zone 3 orders less than \$5,000 list will have a freight minimum fee of **\$375** list, plus **7%** of list

Hawaii, Alaska, and International

Note. This system does not apply to our international customers or those living in Alaska and Hawaii, **freight must be quoted separately for these orders.**



Example 1 Below \$5,000 list



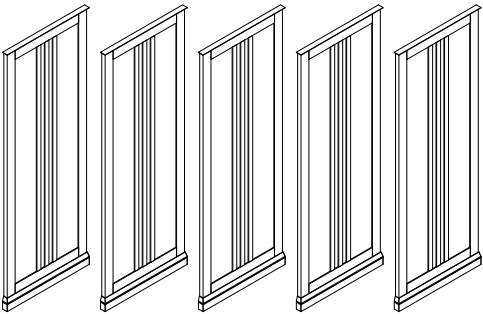
EP-BR-7828

List Price - \$1,838

Nominal Size - 28" D x 78" H

- **Zone 1** List Price: $\$1,838 + \$375(\text{flat fee}) = \$2,213$
- **Zone 2** List Price: $\$1,838 + \$375(\text{flat fee}) + \$73(4\% \text{ of list}) = \$2,286$
- **Zone 3** List Price: $\$1,838 + \$375(\text{flat fee}) + \$128(7\% \text{ of list}) = \$2,341$

Example 2 Above \$5,000 list



EP-BR-7828 (more than one)

List Price - \$9,190

Nominal Size - 28" D x 78" H

- **Zone 1** List Price: $\$9,190 = \$9,190$
- **Zone 2** List Price: $\$9,190 + \$367(4\% \text{ of list}) = \$9,557$
- **Zone 3** List Price: $\$9,190 + \$643(7\% \text{ of list}) = \$9,833$

***LIAT product is shipped knocked down (KD). Assembly in the field is required.**

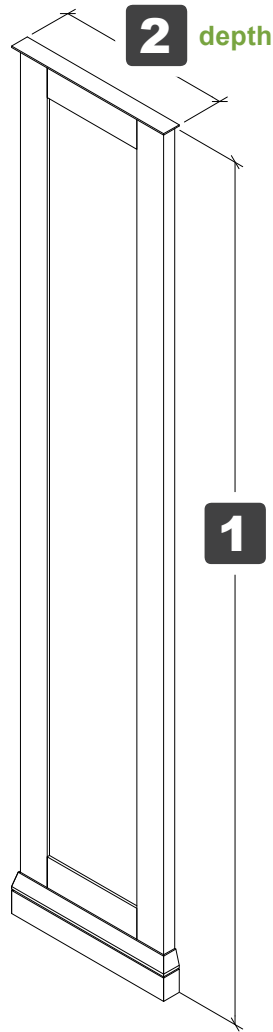
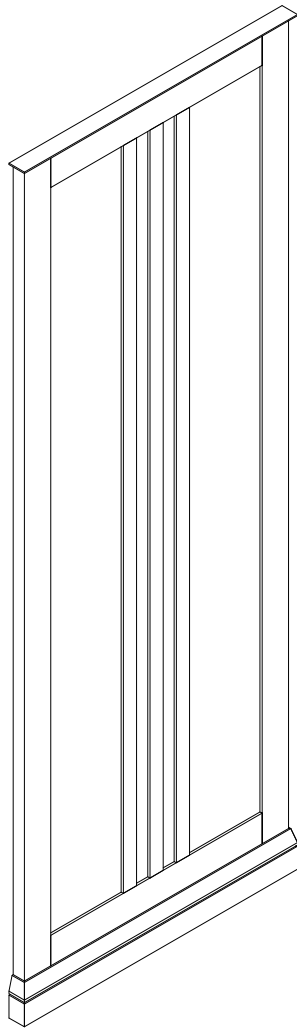
Pricing Guide Tutorial

How to use this pricing guide

These pages are a guide on how to build and customize your *Arlington* table using this specification and pricing guide.



Required Selections



View Features

Shown options creating a unique product code

Unit Shown (left) EP-BR-7828

Unit Shown (right) EP-BR-7814

Price of unit shown

List Price \$2,022

List Price \$1,011



To compare various combinations, use price chart

Required Selections			42" High	48" High	54" High	66" High	78" High	84" High	90" High		
1	Height	42 42" High Panel	\$0	-	-	-	-	-	-		
		48 48" High Panel	-	\$0	-	-	-	-	-		
		54 54" High Panel	-	-	\$0	-	-	-	-		
		66 66" High Panel	-	-	-	\$0	-	-	-		
		78 78" High Panel	-	-	-	-	\$0	-	-		
		84 84" High Panel	-	-	-	-	-	\$0	-		
		90 90" High Panel	-	-	-	-	-	-	\$0		
		2	Depth	10 10" Wide Panel	\$389	\$445	\$500	\$611	\$722	\$778	\$833
12 12" Wide Panel	\$467			\$534	\$600	\$733	\$867	\$933	\$1,000		
14 14" Wide Panel	\$545			\$622	\$700	\$856	\$1,011	\$1,089	\$1,167		
16 16" Wide Panel	\$622			\$711	\$800	\$978	\$1,155	\$1,244	\$1,333		
18 18" Wide Panel	\$700			\$800	\$900	\$1,100	\$1,300	\$1,400	\$1,500		
-Note: Units less than 20" wide do not receive center slats											
20 20" Wide Panel	\$778			\$889	\$1,000	\$1,222	\$1,444	\$1,555	\$1,666		
22 22" Wide Panel	\$856			\$978	\$1,100	\$1,344	\$1,589	\$1,711	\$1,833		
24 24" Wide Panel	\$933			\$1,067	\$1,200	\$1,466	\$1,733	\$1,866	\$2,000		
26 26" Wide Panel	\$1,011			\$1,155	\$1,300	\$1,589	\$1,877	\$2,022	\$2,166		
28 28" Wide Panel	\$1,089			\$1,244	\$1,400	\$1,711	\$2,022	\$2,177	\$2,333		
30 30" Wide Panel	\$1,167			\$1,333	\$1,500	\$1,833	\$2,166	\$2,333	\$2,499		
32 32" Wide Panel	\$1,244			\$1,422	\$1,600	\$1,955	\$2,310	\$2,488	\$2,666		

EP-BR-7828

\$2,022

End Panels

an aesthetically pleasing cap to a functional design

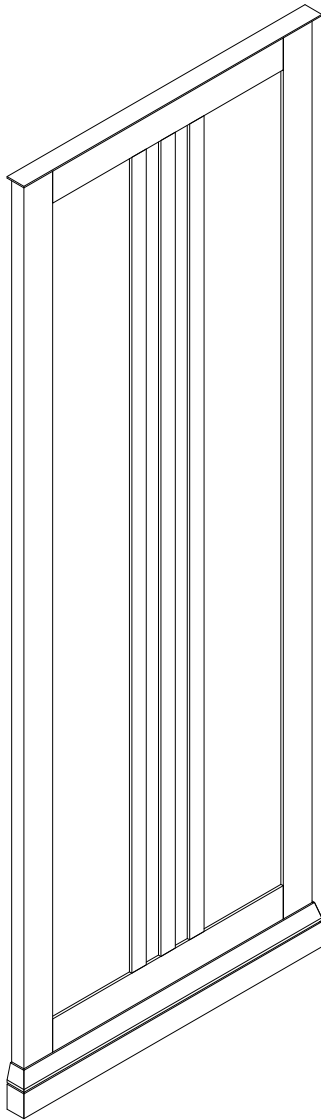


End Panels

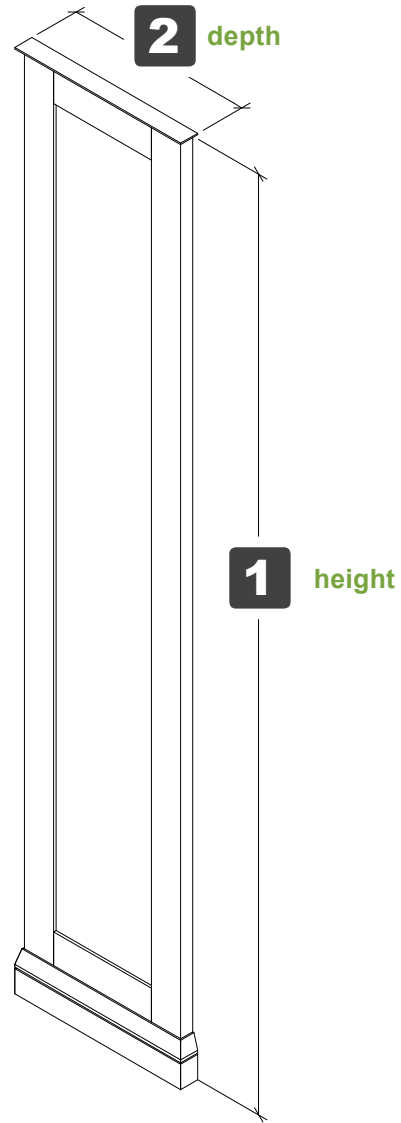
Barrister | Build Guide

Use the following guide to **determine the catalog number** for your End Panel by **selecting your choice** from the available options. To **determine your list price**, add all prices for your selected items from the table to the right.

EP - BR - ^{height} **1** ^{depth} **2**



Double Face



Single Face

Unit Shown(left) EP-BR-7828

List Price \$2,022

Unit Shown(right) EP-BR-7814

List Price \$1,011

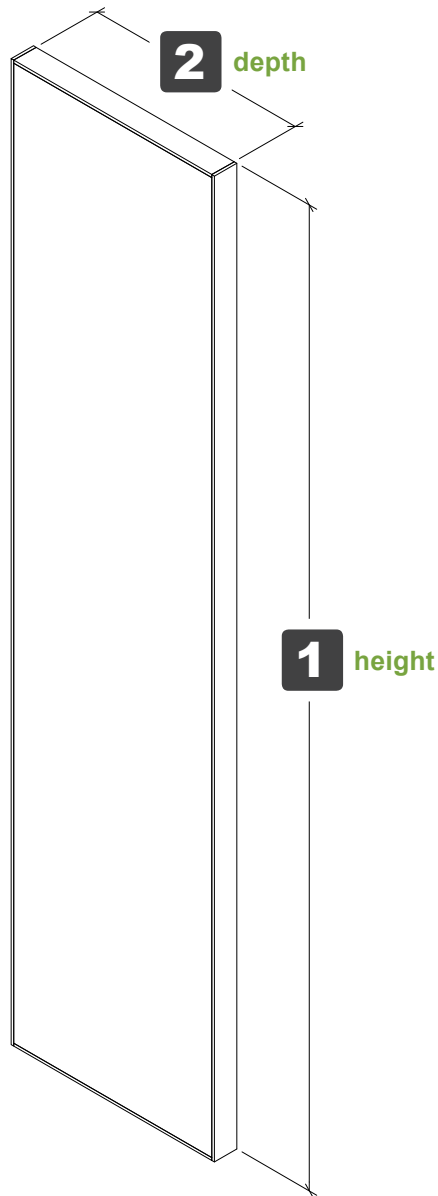
Required Selections									
Component	Code Description	42" High	48" High	54" High	66" High	78" High	84" High	90" High	
1 Height	42 42" High Panel	\$0	-	-	-	-	-	-	
	48 48" High Panel	-	\$0	-	-	-	-	-	
	54 54" High Panel	-	-	\$0	-	-	-	-	
	66 66" High Panel	-	-	-	\$0	-	-	-	
	78 78" High Panel	-	-	-	-	\$0	-	-	
	84 84" High Panel	-	-	-	-	-	\$0	-	
	90 90" High Panel	-	-	-	-	-	-	\$0	
2 Depth	10 10" Wide Panel	\$389	\$445	\$500	\$611	\$722	\$778	\$833	
	12 12" Wide Panel	\$467	\$534	\$600	\$733	\$867	\$933	\$1,000	
	14 14" Wide Panel	\$545	\$622	\$700	\$856	\$1,011	\$1,089	\$1,167	
	16 16" Wide Panel	\$622	\$711	\$800	\$978	\$1,155	\$1,244	\$1,333	
	18 18" Wide Panel	\$700	\$800	\$900	\$1,100	\$1,300	\$1,400	\$1,500	
	-Note: Units less than 20" wide do not receive center slats								
	20 20" Wide Panel	\$778	\$889	\$1,000	\$1,222	\$1,444	\$1,555	\$1,666	
	22 22" Wide Panel	\$856	\$978	\$1,100	\$1,344	\$1,589	\$1,711	\$1,833	
	24 24" Wide Panel	\$933	\$1,067	\$1,200	\$1,466	\$1,733	\$1,866	\$2,000	
	26 26" Wide Panel	\$1,011	\$1,155	\$1,300	\$1,589	\$1,877	\$2,022	\$2,166	
	28 28" Wide Panel	\$1,089	\$1,244	\$1,400	\$1,711	\$2,022	\$2,177	\$2,333	
	30 30" Wide Panel	\$1,167	\$1,333	\$1,500	\$1,833	\$2,166	\$2,333	\$2,499	
	32 32" Wide Panel	\$1,244	\$1,422	\$1,600	\$1,955	\$2,310	\$2,488	\$2,666	

End Panels

Concord | Build Guide

Use the following guide to **determine the catalog number** for your End Panel by **selecting your choice** from the available options. To **determine your list price**, add all prices for your selected items from the table to the right.

EP - CO - ^{height} **1** ^{depth} **2**



Unit Shown EP-CO-7814

List Price \$356

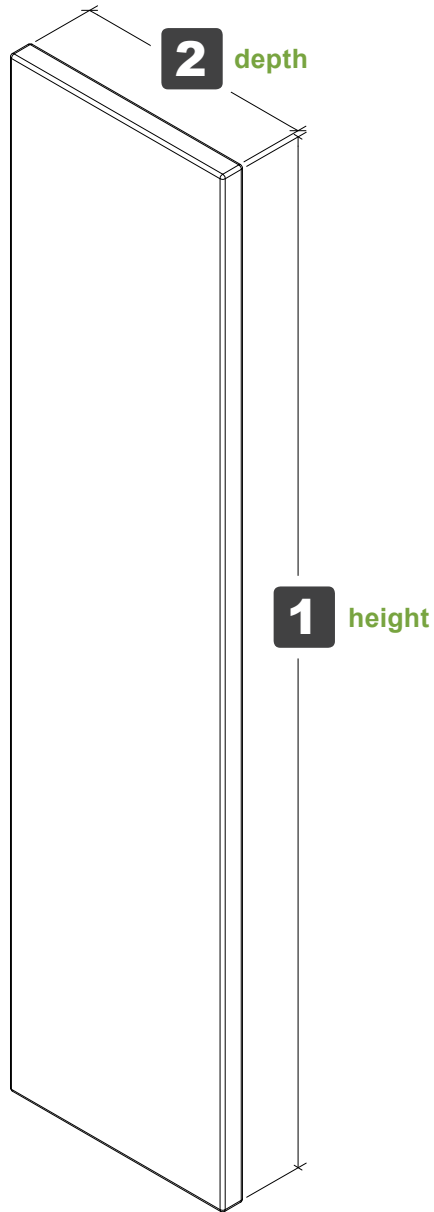
Required Selections									
Component	Code Description	42" High	48" High	54" High	66" High	78" High	84" High	90" High	
1 Height	42 42" High Panel	\$0	-	-	-	-	-	-	-
	48 48" High Panel	-	\$0	-	-	-	-	-	-
	54 54" High Panel	-	-	\$0	-	-	-	-	-
	66 66" High Panel	-	-	-	\$0	-	-	-	-
	78 78" High Panel	-	-	-	-	\$0	-	-	-
	84 84" High Panel	-	-	-	-	-	\$0	-	-
	90 90" High Panel	-	-	-	-	-	-	-	\$0
2 Depth	10 10" Wide Panel	\$154	\$182	\$206	\$227	\$247	\$271	\$299	
	12 12" Wide Panel	\$186	\$215	\$243	\$275	\$303	\$328	\$368	
	14 14" Wide Panel	\$215	\$247	\$283	\$324	\$356	\$388	\$433	
	16 16" Wide Panel	\$243	\$283	\$324	\$372	\$404	\$449	\$497	
	18 18" Wide Panel	\$275	\$320	\$364	\$416	\$461	\$505	\$562	
	20 20" Wide Panel	\$307	\$356	\$400	\$469	\$509	\$562	\$630	
	22 22" Wide Panel	\$336	\$388	\$441	\$517	\$562	\$626	\$695	
	24 24" Wide Panel	\$368	\$420	\$485	\$562	\$618	\$671	\$760	
	26 26" Wide Panel	\$408	\$465	\$538	\$614	\$667	\$735	\$824	
	28 28" Wide Panel	\$441	\$505	\$590	\$659	\$719	\$792	\$893	
	30 30" Wide Panel	\$473	\$550	\$630	\$707	\$776	\$849	\$958	
	32 32" Wide Panel	\$501	\$582	\$667	\$752	\$832	\$917	\$998	

End Panels

Davidson | Build Guide

Use the following guide to **determine the catalog number** for your End Panel by **selecting your choice** from the available options. To **determine your list price**, add all prices for your selected items from the table to the right.

EP - DA - ^{height} **1** ^{depth} **2**



Unit Shown EP-DA-7814

List Price \$659

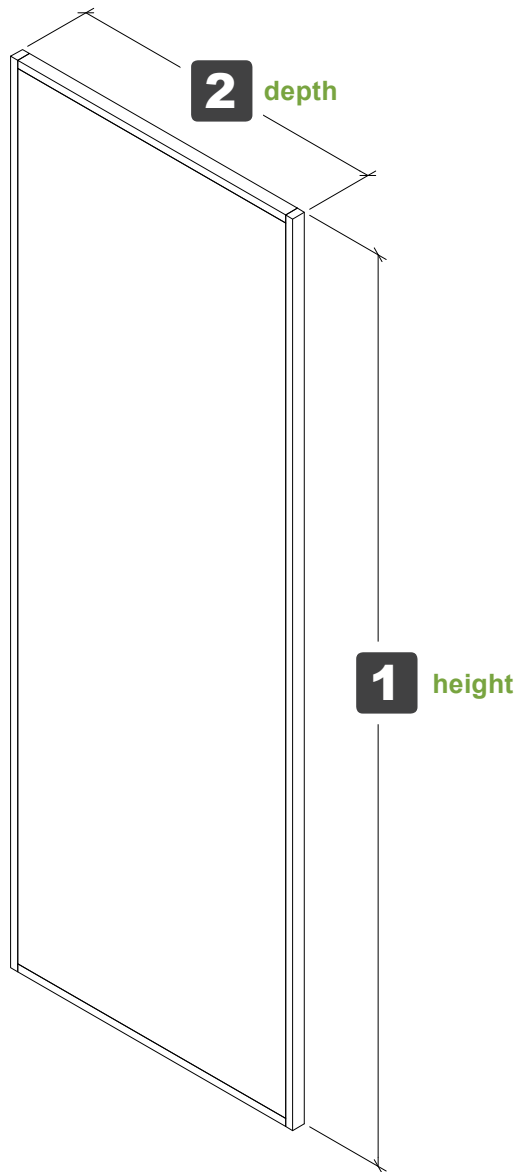
Required Selections									
Component	Code	Description	42" High	48" High	54" High	66" High	78" High	84" High	90" High
1	Height	42 42" High Panel	\$0	-	-	-	-	-	-
		48 48" High Panel	-	\$0	-	-	-	-	-
		54 54" High Panel	-	-	\$0	-	-	-	-
		66 66" High Panel	-	-	-	\$0	-	-	-
		78 78" High Panel	-	-	-	-	\$0	-	-
		84 84" High Panel	-	-	-	-	-	\$0	-
		90 90" High Panel	-	-	-	-	-	-	\$0
2	Depth	10 10" Wide Panel	\$336	\$376	\$416	\$465	\$477	\$493	\$505
		12 12" Wide Panel	\$380	\$433	\$489	\$550	\$566	\$582	\$606
		14 14" Wide Panel	\$420	\$489	\$558	\$639	\$659	\$675	\$699
		16 16" Wide Panel	\$469	\$546	\$630	\$723	\$752	\$772	\$796
		18 18" Wide Panel	\$509	\$606	\$699	\$812	\$840	\$861	\$893
		20 20" Wide Panel	\$554	\$659	\$772	\$901	\$933	\$954	\$986
		22 22" Wide Panel	\$602	\$715	\$836	\$986	\$1,030	\$1,046	\$1,083
		24 24" Wide Panel	\$643	\$776	\$909	\$1,075	\$1,119	\$1,135	\$1,180
		26 26" Wide Panel	\$687	\$828	\$978	\$1,160	\$1,212	\$1,228	\$1,273
		28 28" Wide Panel	\$727	\$889	\$1,050	\$1,248	\$1,301	\$1,321	\$1,374
		30 30" Wide Panel	\$776	\$945	\$1,119	\$1,337	\$1,394	\$1,414	\$1,470
		32 32" Wide Panel	\$816	\$998	\$1,188	\$1,422	\$1,487	\$1,507	\$1,563

End Panels

Deveraux | Build Guide

Use the following guide to **determine the catalog number** for your End Panel by **selecting your choice** from the available options. To **determine your list price**, add all prices for your selected items from the table to the right.

EP - DV - ^{height} **1** ^{depth} **2**



Unit Shown EP-DV-8430

List Price \$1,096

Required Selections									
Component	Code Description	42" High	48" High	54" High	66" High	78" High	84" High	90" High	
1 Height	42 42" High Panel	\$0	-	-	-	-	-	-	-
	48 48" High Panel	-	\$0	-	-	-	-	-	-
	54 54" High Panel	-	-	\$0	-	-	-	-	-
	66 66" High Panel	-	-	-	\$0	-	-	-	-
	78 78" High Panel	-	-	-	-	\$0	-	-	-
	84 84" High Panel	-	-	-	-	-	\$0	-	-
	90 90" High Panel	-	-	-	-	-	-	-	\$0
2 Depth	10 10" Wide Panel	\$183	\$209	\$235	\$287	\$340	\$366	\$392	
	12 12" Wide Panel	\$220	\$251	\$282	\$345	\$407	\$439	\$470	
	14 14" Wide Panel	\$256	\$293	\$329	\$402	\$475	\$512	\$548	
	16 16" Wide Panel	\$293	\$334	\$376	\$460	\$543	\$585	\$626	
	18 18" Wide Panel	\$329	\$376	\$423	\$517	\$611	\$658	\$705	
	20 20" Wide Panel	\$366	\$418	\$470	\$574	\$679	\$731	\$783	
	22 22" Wide Panel	\$402	\$460	\$517	\$632	\$746	\$804	\$861	
	24 24" Wide Panel	\$439	\$501	\$564	\$689	\$814	\$877	\$939	
	26 26" Wide Panel	\$475	\$543	\$611	\$746	\$882	\$950	\$1,018	
	28 28" Wide Panel	\$512	\$585	\$658	\$804	\$950	\$1,023	\$1,096	
	30 30" Wide Panel	\$548	\$626	\$705	\$861	\$1,018	\$1,096	\$1,174	
	32 32" Wide Panel	\$585	\$668	\$752	\$919	\$1,085	\$1,169	\$1,252	

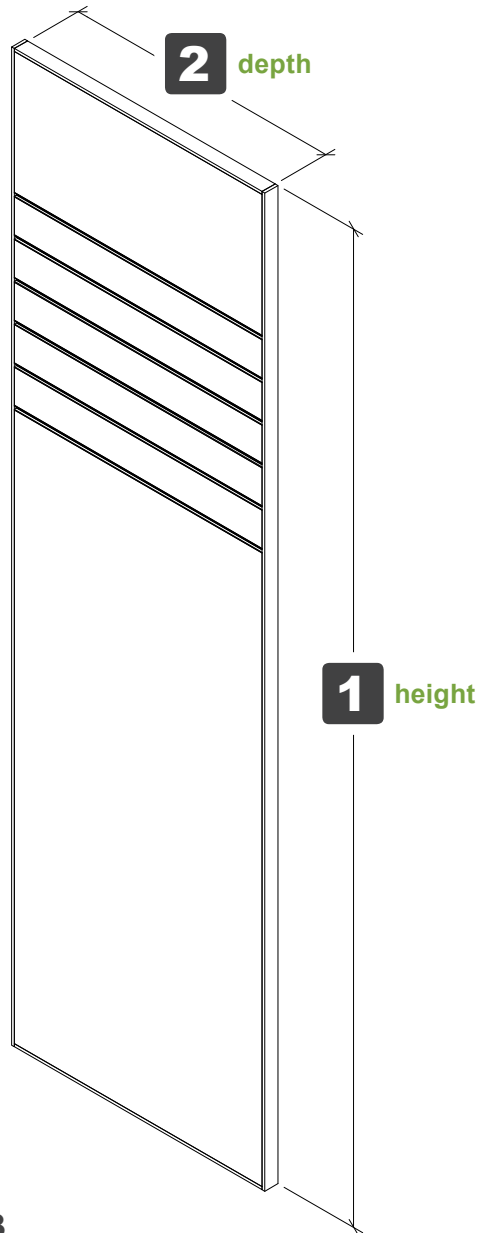
End Panels

Slatwall | Build Guide

Use the following guide to **determine the catalog number** for your End Panel by **selecting your choice** from the available options. To **determine your list price**, add all prices for your selected items from the table to the right.

EP – SW – **1** **2** – **3** – **4**

height depth slats slat color



Unit Shown EP-SW-8430-6S-B

List Price \$1,217

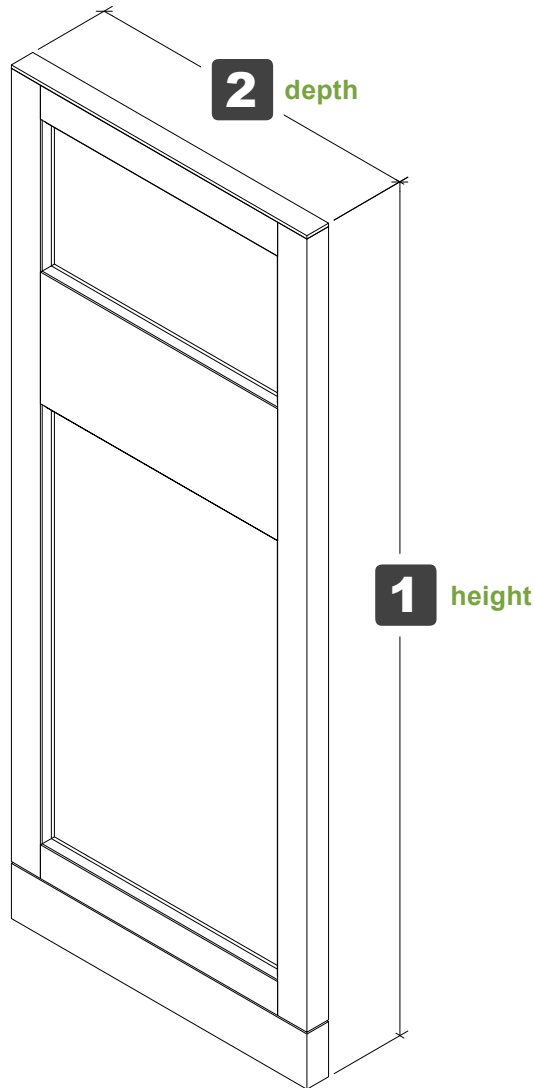
Required Selections									
Component	Code Description	42" High	48" High	54" High	66" High	78" High	84" High	90" High	
1 Height	42 42" High Panel	\$0	-	-	-	-	-	-	-
	48 48" High Panel	-	\$0	-	-	-	-	-	-
	54 54" High Panel	-	-	\$0	-	-	-	-	-
	66 66" High Panel	-	-	-	\$0	-	-	-	-
	78 78" High Panel	-	-	-	-	\$0	-	-	-
	84 84" High Panel	-	-	-	-	-	\$0	-	-
	90 90" High Panel	-	-	-	-	-	-	-	\$0
2 Depth	10 10" Wide Panel	\$304	\$330	\$356	\$408	\$461	\$487	\$513	
	12 12" Wide Panel	\$341	\$372	\$403	\$466	\$528	\$560	\$591	
	14 14" Wide Panel	\$377	\$414	\$450	\$523	\$596	\$633	\$669	
	16 16" Wide Panel	\$414	\$455	\$497	\$581	\$664	\$706	\$747	
	18 18" Wide Panel	\$450	\$497	\$544	\$638	\$732	\$779	\$826	
	20 20" Wide Panel	\$487	\$539	\$591	\$695	\$800	\$852	\$904	
	22 22" Wide Panel	\$523	\$581	\$638	\$753	\$867	\$925	\$982	
	24 24" Wide Panel	\$560	\$622	\$685	\$810	\$935	\$998	\$1,060	
	26 26" Wide Panel	\$596	\$664	\$732	\$867	\$1,003	\$1,071	\$1,139	
	28 28" Wide Panel	\$633	\$706	\$779	\$925	\$1,071	\$1,144	\$1,217	
	30 30" Wide Panel	\$669	\$747	\$826	\$982	\$1,139	\$1,217	\$1,295	
	32 32" Wide Panel	\$706	\$789	\$873	\$1,040	\$1,206	\$1,290	\$1,373	
	3 Slats	6S 6 Slats	\$0	\$0	\$0	\$0	\$0	\$0	\$0
FS Full Slats		\$222	\$242	\$283	\$343	\$424	\$464	\$485	
4 Slat Color	B Black Slats	\$0	\$0	\$0	\$0	\$0	\$0	\$0	
	G Light Gray Slats	\$0	\$0	\$0	\$0	\$0	\$0	\$0	
	W White Slats	\$0	\$0	\$0	\$0	\$0	\$0	\$0	

End Panels

Southbury | Build Guide

Use the following guide to **determine the catalog number** for your End Panel by **selecting your choice** from the available options. To **determine your list price**, add all prices for your selected items from the table to the right.

EP - SB - ^{height} **1** ^{depth} **2**



Unit Shown SB-EP-6624

List Price \$1,622

Required Selections									
Component	Code Description	42" High	48" High	54" High	66" High	78" High	84" High	90" High	
1 Height	42 42" High Panel	\$0	-	-	-	-	-	-	-
	48 48" High Panel	-	\$0	-	-	-	-	-	-
	54 54" High Panel	-	-	\$0	-	-	-	-	-
	66 66" High Panel	-	-	-	\$0	-	-	-	-
	78 78" High Panel	-	-	-	-	\$0	-	-	-
	84 84" High Panel	-	-	-	-	-	\$0	-	-
	90 90" High Panel	-	-	-	-	-	-	-	\$0
2 Depth	10 10" Wide Panel	\$430	\$492	\$553	\$676	\$799	\$860	\$922	
	12 12" Wide Panel	\$516	\$590	\$664	\$811	\$959	\$1,032	\$1,106	
	14 14" Wide Panel	\$602	\$688	\$774	\$946	\$1,118	\$1,204	\$1,290	
	16 16" Wide Panel	\$688	\$787	\$885	\$1,081	\$1,278	\$1,376	\$1,475	
	18 18" Wide Panel	\$774	\$885	\$995	\$1,217	\$1,438	\$1,548	\$1,659	
	20 20" Wide Panel	\$860	\$983	\$1,106	\$1,352	\$1,597	\$1,720	\$1,843	
	22 22" Wide Panel	\$946	\$1,081	\$1,217	\$1,487	\$1,757	\$1,892	\$2,027	
	24 24" Wide Panel	\$1,032	\$1,180	\$1,327	\$1,622	\$1,917	\$2,064	\$2,212	
	26 26" Wide Panel	\$1,118	\$1,278	\$1,438	\$1,757	\$2,076	\$2,236	\$2,396	
	28 28" Wide Panel	\$1,204	\$1,376	\$1,548	\$1,892	\$2,236	\$2,408	\$2,580	
	30 30" Wide Panel	\$1,290	\$1,475	\$1,659	\$2,027	\$2,396	\$2,580	\$2,764	
	32 32" Wide Panel	\$1,376	\$1,573	\$1,769	\$2,162	\$2,555	\$2,752	\$2,949	

Terms and Conditions

End Panels Terms and Conditions

The following terms & conditions apply to all LIAT, LLC products.

1. ACCEPTANCE, MODIFICATION, ASSIGNMENT: By placing this order for furniture, material or other products (sometimes collectively referred to as "Goods"), Customer agrees to these Terms and Conditions which shall prevail over inconsistent provisions in any other form or document of Customer. No change or modification shall be applicable unless set forth in writing and signed by Company. Neither this order nor any interest therein shall be assigned by Customer except with the prior written consent of Company.

2. PRICING: LIAT, LLC assumes no responsibility for the quantities or the interpretation of competitive product. Pricing is based on standard LIAT furniture including standard construction, materials, finishes and sizes. Unit prices shall prevail. Pricing subject to change without notice. Prices are those in effect at the time of order entry.

3. PAYMENT: Customer agrees to pay deposit or down payment as required by Company. Customer agrees to pay to Company the amount indicated on the Invoice, 1% 15 days, net 30 days from date of Invoice (U.S. Funds only), for Goods ordered. **INTEREST WILL BE CHARGED AFTER 30 DAYS FROM THE DATE OF INVOICE AT THE RATE OF ONE AND A HALF PERCENT (1.5%) PER MONTH.** International sales will require additional payment arrangements. No Goods shall be sold on consignment or conditional sales basis. Payment for the Goods delivered hereunder shall constitute acceptance thereof.

4. DELIVERY: The specific terms of delivery are as stated on the sales order acknowledgment. Goods which are delivered in advance of schedule are delivered at the risk of Customer. The Company is not liable for delays or failure to ship due to fire, strike, act of God, the public enemy or other causes beyond the control of the Company. With respect to LIAT, LLC, all shipments which are F.O.B. Factory or Delivered, LIAT, LLC reserves the right to select the appropriate carrier. Special requests including, but not limited to, inside delivery, installation, and call before delivery are not included in the price. Any charges arising from failure to meet shipment, rerouting while in transit, or carrier storage charges are the responsibility of the Customer.

*LIAT product is shipped knocked down. Assembly in the field is required.

5. CARE AND MAINTENANCE: To maintain your LIAT product for years of use, please follow these care and maintenance guidelines:

Wood Care and Maintenance: Use a damp, lint free cotton cloth for general dusting. Work with the grain of the wood.

Laminate Tops: Laminates may be cleaned using a damp cloth and mild soap.

Marmoleum Tops: Marmoleum can be maintained by dry or wet maintenance systems. For detailed product specifications or maintenance information, contact Forbo Industries Support Services at 1-800-842-7839 or visit their website www.forbo-industries.com.

Metal Finishes: Mix a solution of liquid soap and warm water. Saturate a clean cloth with this mixture. Wipe down metal then dry completely.

Acrylic Products: Use only products specifically recommended for cleaning acrylic, or a mild solution of dish detergent and warm water. Do **NOT** use any cleaner containing ammonia to clean your acrylic products. Do **NOT** use a dry cloth or your hand to clean the acrylic - this will rub the dirt and dust into the acrylic and can scratch the surface.

Fabric Care: The ability to be cleaned will vary based on the type of fabric. For best results, a professional service is recommended. Dirt and crumbs may be gently brushed or vacuumed off. Spill should be wiped up immediately with a cloth. If upholstery has been protected with Scotchgard or Zepel, the coating should be re-applied yearly. Vinyl textiles can be cleaned with warm soapy water and then wiped down with a warm damp cloth.

6. CLAIMS. All shipments are delivered to the carrier in good condition and Company's liability ceases after acceptance by carrier. If shipment arrives short or damaged, the Customer must file a claim immediately with the carrier. In the event of concealed damage, notify carrier and request an immediate inspection. Keep all cartons and packing material. Failure to file claim within 15 days after receipt of Goods constitutes acceptance and a waiver of any such claims

7. DISCLAIMER OF WARRANTIES: The express warranties below are the Company's sole warranties of its Goods, there are no understandings, agreements, representations, or warranties, express or implied (including any regarding the merchantability or fitness for a particular purpose), not specified herein, respecting the Goods. Except for those obligations of the Company identified in these Terms and Conditions, all risks related to the quality and performance of the Goods and responsibility for repair or service costs rests solely on the Customer. Company reserves the right to limit the applicable warranty to the Goods depending upon the division or catalogue through which said Goods were sold. Some states do not allow limitations on implied warranties, limitations on how long an implied warranty lasts, or the exclusion or limitation of incidental or consequential damages, so the above limitations may not apply to all Customers. This warranty gives the Customer specific legal rights, and each Customer may also have other rights which vary from state to state.

8. EXPRESS WARRANTIES: *The express warranties of the Company are as follows:*

LIAT, LLC

LIAT, LLC WARRANTS TO THE ORIGINAL PURCHASER THAT EACH CASEGOOD WILL BE FREE FROM DEFECTS IN WORKMANSHIP GIVEN NORMAL USE FOR A PERIOD OF TWENTY (20) YEARS OF SINGLE SHIFT SERVICE. LIAT WARRANTS THEIR SEATING PRODUCTS TO THE ORIGINAL PURCHASER THAT EACH PIECE OF FURNITURE WILL BE FREE FROM DEFECTS GIVEN NORMAL USE FOR FIVE (5) YEARS. LIAT, LLC WILL, AT ITS OPTION, REPAIR OR REPLACE ANY DEFECTIVE FURNITURE WITHIN THE TERMS OF THE WARRANTY. THIS WARRANTY DOES NOT APPLY TO DAMAGE RESULTING FROM ACCIDENT, ALTERATION, OR MISUSE. ALL LIAT ELECTRICAL COMPONENTS AND ACCESSORIES ARE WARRANTED TO THE EXTENT OF THE ORIGINAL MANUFACTURER.

Goods other than furniture are sold by Company to Customer without warranty.

9. ATTORNEYS' FEES: Customer shall be responsible for all expenses and costs in connection with the enforcement by Company of these Terms and Conditions and the costs of collection (including the fees of any collection agencies to whom the Customer's account may be referred), plus reasonable attorneys' fees (which attorneys' fees shall not be less than 25% of the amount due, unless a lower amount is specified by applicable law).

10. CANCELLATION: All cancellations must be made in writing. Administrative and/or labor charges may be incurred by the Customer depending upon the production stage of the order. Orders specifying special finish cannot be cancelled once finishing has begun. Cancellations cannot be accepted once final production has begun.

11. ORDER CHANGES: All changes to an order must be made in writing and are subject to Company's ability to conform. Administrative and/or labor charges may be incurred by the Customer depending upon the production stage of the order. Once final production has begun, no changes can be accepted.

12. REMEDIES: The remedies herein reserved shall be cumulative, and additional to any other or further remedies provided in law or equity. No waiver of a breach of any provision of these Terms and Conditions shall constitute waiver of any other breach or of such provision.

13. INSOLVENCY: Company may forthwith cancel this order in the event of the happening of any of the following or any other comparable event: insolvency of the Customer, the filing of a voluntary petition in bankruptcy, the filing of any involuntary petition to have Customer declared bankrupt provided it is not vacated within thirty (30) days from the date of filing, the appointment of a receiver or trustee for Customer provided such appointment is not vacated within thirty (30) days from the date of such appointment, or the execution by Customer of an assignment for the benefit of creditors.

14. LIMITATION OF LIABILITY: The Company shall not under any circumstances be liable to the Customer, owner of the Goods or any third party for special, indirect, incidental, or consequential damages, including, without limitation, loss of profits or revenues, loss or damage to other property or equipment, cost of capital or of purchased or replacement goods, or expense, delay or inconvenience caused by or arising from the purchase, sale, use, repair or inability to use the Goods or by any performance or non-performance under, or breach of, these Terms and Conditions. The Company's sole liability for any defective Goods shall be its repair or its replacement pursuant to the Express Warranties set forth above, or if amended, as applicable at the time of manufacture or repair of the Goods. Some states do not allow the exclusion or limitation of incidental or consequential damages, so the above limitations or exclusion may not apply to all Customers. Any action resulting from any breach on the part of Company as to the Goods or services delivered hereunder must be commenced within one year after the cause of action has occurred.

15. RETURNS AND ALLOWANCES: Reasonable touch-up and deluxing is the dealer's responsibility. The Company will not make allowances for trip or delivery charges, but will only make allowance for actual work performed to correct manufacturing defects. Allowances may be authorized only by a Company officer. It is the responsibility of the field sales representatives to inspect any defective merchandise and make suggestions and recommendations as to the proper disposition. Field personnel cannot obligate or bind the Company by definite agreement, without final authorization by a Company officer. Company will not accept automatic charge backs which do not have prior authorization. All defects must be called to the Company's attention upon arrival at the Customer's "Ship To" destination. To initiate any type of claim or request for parts, it is imperative to have the model number or fabric number, which may be located on the tag attached to the frame of the unit. Authorization for return to the Company for any reason must be issued by the Company via a Return Goods Authorization. Any authorized returns not due to damage or defect will be assessed a 30% restocking charge and all return freight charges must be prepaid. Company will not issue credit allowances for any repairs without Company's prior consent. Under no circumstances shall the Company accept COD (Cash on Delivery) returns, and any such shipment will be refused.

16. SECURITY AGREEMENT: The Company may require and Customer shall grant a security interest in Goods sold pursuant to any credit the Company may extend to the Customer.

17. GOVERNING LAW: All disputes between the parties, whether or not arising out of these Terms and Conditions, will be governed by the laws of the State of North Carolina. Customer agrees to submit to the jurisdiction of and agrees all lawsuits relating to any disputes between the Customer and the Company will be brought only in a state court located in Dubois County, North Carolina or the United States District Court for the Southern District of

North Carolina. THE CUSTOMER HEREBY WAIVES THE RIGHT TO A TRIAL BY JURY IN ANY ACTION, PROCEEDING, CLAIM, OR COUNTERCLAIM WHETHER IN CONTRACT OR TORT, AT LAW OR IN EQUITY, ARISING OUT OF OR RELATING IN ANY WAY TO THESE TERMS AND CONDITIONS AND ALL OTHER DISPUTES BETWEEN THE PARTIES.

18. MITIGATION: If the Company repossesses the Goods prior to payment by the Customer of all amounts due hereunder, the Company may sell the Goods, AS IS, WHERE IS, free and clear of all rights of the Customer at either public or private sale, and apply the net proceeds (after deducting expenses of repossession and sale) to the obligation of Customer hereunder. The Customer shall remain liable for any deficiency. THE COMPANY MAY DISPOSE OF THE GOODS IN ANY COMMERCIALY REASONABLE PLACE AND MANNER AND THE CUSTOMER WAIVES ANY NOTICE OF TIME, PLACE AND MANNER OF SALE.

19. INTEGRATION: This order for Goods, including these Terms and Conditions, along with any Credit Application, Invoice, Statement, Dealer Contract, Acknowledgment, Bill of Lading (and any exhibits, addenda or amendments thereto) of which this order may be a part, constitutes the sole and complete agreement between the Company and the Customer with respect to the purchase of the Goods.

20. DIMENSIONS/SPECIFICATIONS/FINISHES: All dimensions are approximate and may vary due to the upholstery technique of each craftsman. If exact dimensions are required, it is necessary for the Customer to state such specifications with the order. Detailed specification sheets are available for each series of Goods, and Customer should consult the Company's Customer Service Department for these specification sheets. Company reserves the right to make changes in dimensions, style, or specifications if Company believes these changes will improve the Goods' quality or appearance. Company reserves the right to substitute hardwoods due to availability at production. Due to the natural characteristics of wood, environmental effects, and material upgrades, the Company cannot guarantee exact finish matches on existing Goods previously ordered from Company. If an exact match to Customer's existing Goods are required, it must be specified so that the proper procedures can be followed to ensure an acceptable finish. Company will accept no liability for the finish if this procedure is not followed. Company reserves the right to make changes in a finish formula if Company believes the change will improve the quality or appearance of Company's Goods.

21. ACKNOWLEDGEMENT: All orders will be acknowledged promptly, showing how the order was entered, the approximate shipping time and other pertinent information. It is the Customer's obligation to examine this acknowledgment carefully and notify Company immediately of any discrepancies. Every reasonable effort is made to ship as acknowledged, however, the acknowledged ship date is approximate. Company will generally ship within five (5) working days of the acknowledged ship date. If a firm ship date is necessary, Customer must inform Company at time of order and Company will make all reasonable efforts to meet each Customer's request. Acknowledged shipping dates are contingent upon the force majeure conditions contained in these Terms and Conditions.

22. COMPANY'S PERFORMANCE OF ITS OBLIGATIONS: The production and delivery of the Goods to the extent delayed or hindered or prevented from the performance by reason of natural disasters, acts of God, strikes, lockouts, labor troubles, inability to procure materials, casualties, failure of power, restrictive governmental laws or regulations, riots, insurrection, acts of terrorism, war or other reason of a like nature not the fault of the Company shall excuse for the period of the delay the Company's performance and the period for the performance shall be extended for a period equivalent to the period of such delay.

GSA Terms and Conditions

Contractor: LIAT LLC, dba Jasper Library Furniture
Business Size: Small Business
Cage Code: 6BHB5
Contract Number: GS-28F-004AA
Contract Period: 10/10/12 thru 10/09/17

694 North Main Street
Troutman, NC 28166
Phone: 888.440.8205
Fax: 704.528.6519
Web Site: www.liatfurniture.com
E-mail: blish@liatfurniture.com
Contract Administration: Brian Lish

- 1a. Item Description: Furniture Systems and Workstation Clusters Special Item Numbers (SIN) Awarded: SIN 71-305 Library Furniture
2. Maximum Order: \$100,000.00 net
3. Minimum Order: \$100.00 net
4. Geographic Coverage: 48 Contiguous States, including the District of Columbia, Alaska, Hawaii, and Puerto Rico.
5. Point of Production: Same as company address
6. Discount: 58.5% off of list price (inclusive of IFF)
7. Quantity Discounts: None
8. Prompt Payment Terms: 1% discount for payments received in less than 20 days.
- 9a. Government Commercial Credit Card: Government commercial credit cards (Visa & MC) are not accepted.
- 9b. Discount for Government Credit Card: N/A
10. Foreign Items: None
- 11a. Time of Delivery: 6 to 8 weeks.
- 11b. Expedited Delivery: Negotiated on an order by order basis.
- 11c. Overnight and 2-Day Delivery: Contact contractor for availability and additional shipping charges.
- 11d. Urgent Requirements: Available upon request.
12. F.O.B Point: Destination

- 13a. Ordering Address: Same as Contractor
14. Payment Address: Same as company address.
15. Warranty Provisions: LIAT warrants their casegoods to the original purchaser that each piece of furniture will be free from defects in workmanship given normal use for a period of twenty years. LIAT will, at its option, repair or replace any defective merchandise within the terms of the warranty. LIAT warrants their seating products to the original purchaser that each piece of furniture will be free from defects in workmanship given normal use for five years. The casegoods and seating warranties do not apply to damage resulting from accident, alteration, or misuse. All LIAT electrical components and accessories are warranted to the extent of the original manufacturer.
16. Export Packing Charges: N/A
17. Terms and Conditions of Government Commercial Credit Card Acceptance: N/A
18. Terms and Conditions of rental, maintenance, and repair: N/A
19. Terms and Conditions of Installation: Negotiated on a case by case basis with the participating dealer.
20. Terms and Conditions of Repair Parts: N/A
21. List of Service and Distribution Points: N/A
22. Participating Dealer: Contact LIAT for a list of participants.
23. Preventative Maintenance: N/A
- 24a. Environmental Attributes: N/A
25. Data Universal Numbering System (DUNS) number: 038281451
- 26: Notification regarding registration in Central Registration (CCR) database: Registered

LIAT 

design the furniture. *innovate* the space. *engage* the users.

liatfurniture.com

694 North Main Street · Troutman, NC 28166
TF 888 440 8205 · F 704 528 6519