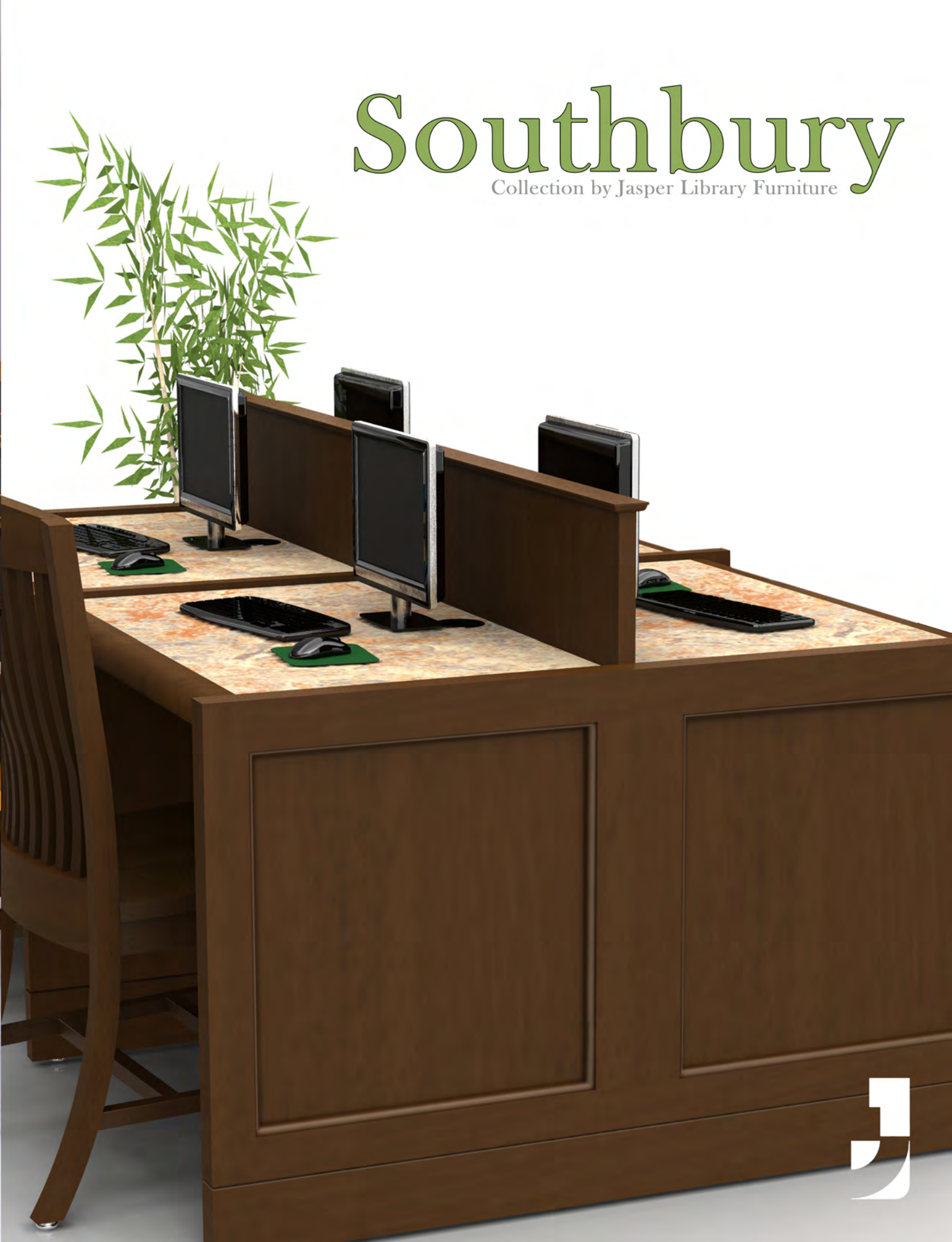




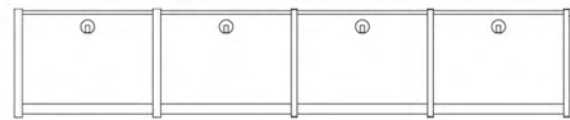
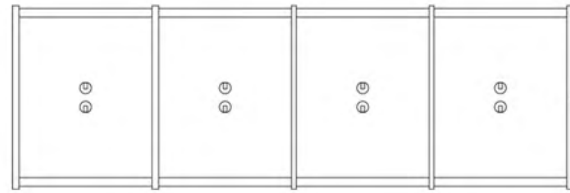
Southbury

Collection by Jasper Library Furniture



Computer Stations

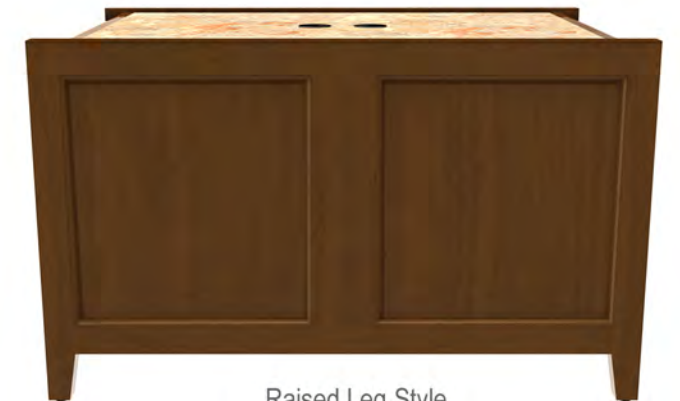
Southbury is a traditional library furniture design featuring waterfall edges, large wood structural members, raised coped panels and fluted legs to achieve the elegance and grace that many library projects require while supporting the rigorous and highly technical environments of current library workspaces.



Double faced and single faced configurations in starter/adder arrangements are an integral part of the Southbury computer table system. Privacy panels are a standard option for both single faced and double faced units.



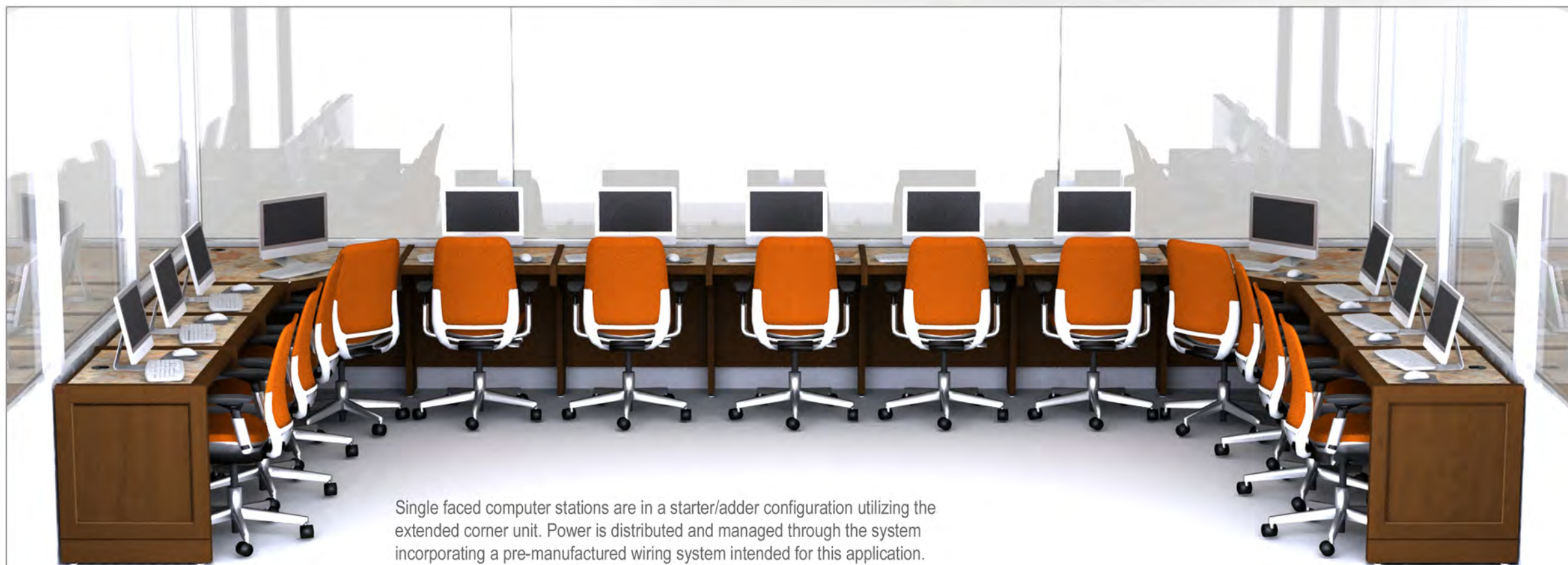
Full Panel Style



Raised Leg Style



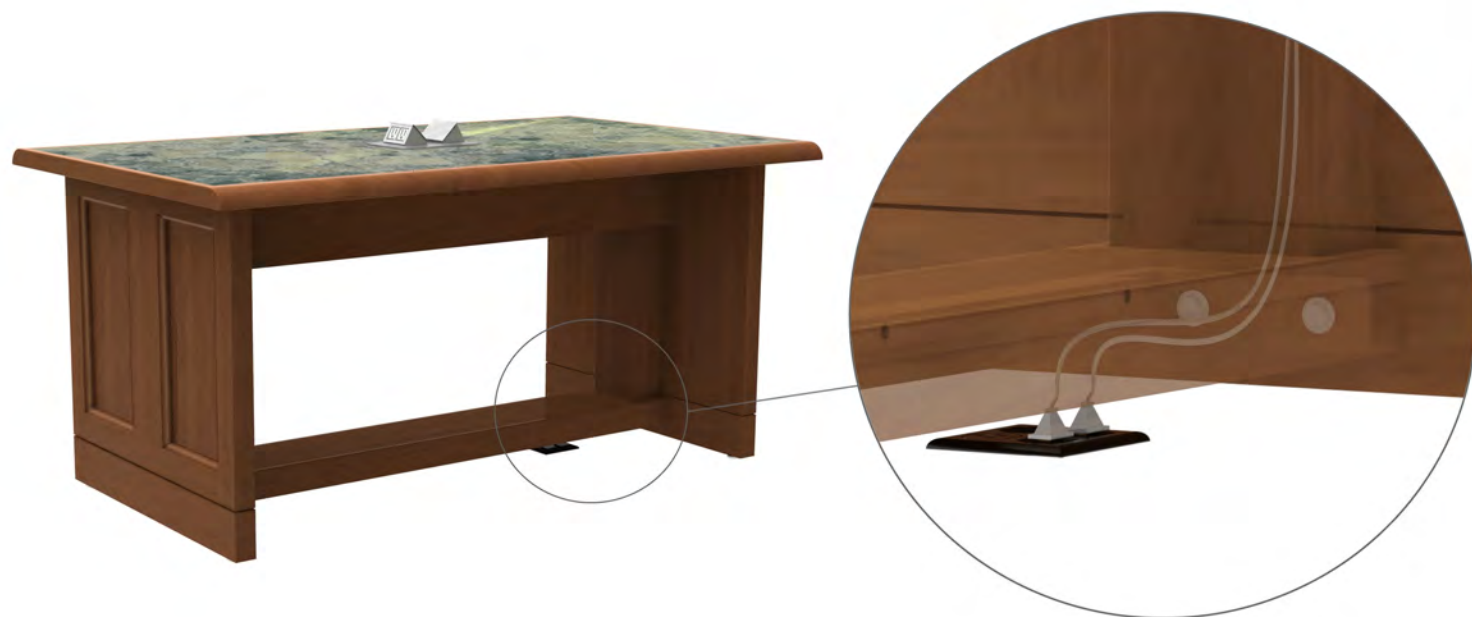
Knee Space Intermediate



Single faced computer stations are in a starter/adder configuration utilizing the extended corner unit. Power is distributed and managed through the system incorporating a pre-manufactured wiring system intended for this application. Data cables are managed through the furniture system using standard accessories.

The marmoleum surfaces shown are anti-static as well as anti-bacterial.





Study Tables

Fluted legs give reading and work tables the elegant accent that Southbury provides. Panel style study tables are available with optional cross stretchers and vertical wire managers when power and data outlets are located in the floor. The elegance of Southbury is fully expressed in a four person reading table. Raised tapered leg styling accentuates the coped panel design.





Study Carrels / Reference Carrels

Traditional study carrel stations combine sturdy reconfigurable components which are connected with metal to metal fasteners. Waterfall work surface edges provide comfort to the user. Carrels are of a starter/adder design available in either sit down or adjustable stand up reference positions. Electrical accessories such as corner mounted power taps and task lights are standard electrical options. Manufactured wiring systems are commonly specified for these stations and are easily adaptable to the Southbury system.



Finish - NMM; Laminate - Forbo 3136 "Concrete"

Display / End Panels

Decorative end panels for the Southbury design are available for use with any of the metal shelving manufacturers. The construction features that characterize tables, carrels and computer stations are also part of the end panel design. A solid signage panel is provided for panels higher than 66". Keeping these pieces as part of the furniture collection ensures that the details of the design will not be compromised. Matching canopy tops are also available.

OPAC stands, atlas stands, and dictionary stands are available in either the full panel or raised tapered leg style.



Finish - Varied; Laminate - Varied

